

SOCKSHOP™
**Heat
Holders**®

THE ULTIMATE™
THERMAL SOCK!

Vorstellung der Marke



**NO
MORE
COLD
FEET!**



Die Geschichte der Heat Holders®

„Im Dezember 2006 sah sich David Doughty an einem Samstagmorgen ein Rugby-Spiel seines Sohns an und stellte nach ungefähr anderthalb Stunden fest, dass seine Füße und seine Zehen bis auf die Knochen durchgefroren waren. Die Ironie ging dabei nicht an ihm vorbei – David trug an diesem Tag Thermosocken, die er basierend auf einer 10-jährigen Karriere in diesem Bereich selbst entwickelt hatte. Er war fassungslos. So verkaufte er doch jedes Jahr Tausende dieser Socken und die hielten nicht mal richtig warm? Das war allerdings nicht überraschend, denn als die Socken im Jahr 1995 das Licht der Welt erblickten, waren sie ein gutes Produkt.

Zehn Jahre später und mit einer steigenden Nachfrage nach immer billigeren Produkten, mussten Gewicht und Qualität allerdings einfach reduziert werden. Die Socken waren zu dünn und David schämte sich, dass er so ein Produkt verkaufte. Ein Produkt, das einfach jeder lieben wird.

Und dann traf es ihn wie ein Blitz. Anstatt die billigsten Socken zu verkaufen, wollte er nun die besten auf dem Markt herstellen. Er machte es zu seiner Mission, die wärmsten und besten Thermosocken der Welt zu entwerfen – „so kann ich wenigstens meinem Sohn beim Spielen zusehen, ohne dass meine Füße dabei erfrieren“. Nachdem er dann zwei Jahren damit verbrachte, die Maschinen umzurüsten und mit verschiedenen Garnen zu experimentieren, erblickten die Heat Holders 2008 das Licht der Welt.

Mehr als 7 mal wärmer als ein basic Baumwolle Socke!

Heat Holders®	2.34	
Normale thermal Socke	0.89	
Basic Baumwolle Socke	0.33	

Die Daten basieren auf der Grundlage einer Socke mit einer Mischung aus 60% Baumwolle, 30% Polypropylen und 10% Elasthan. Die Daten basieren auf einer Socke mit einer Mischung aus 60% Baumwolle, 30% Polypropylen und 10% Elasthan. Die Daten basieren auf einer Socke mit einer Mischung aus 60% Baumwolle, 30% Polypropylen und 10% Elasthan. Die Daten basieren auf einer Socke mit einer Mischung aus 60% Baumwolle, 30% Polypropylen und 10% Elasthan.



UK 6-11
EUR 39-45
US 7-12

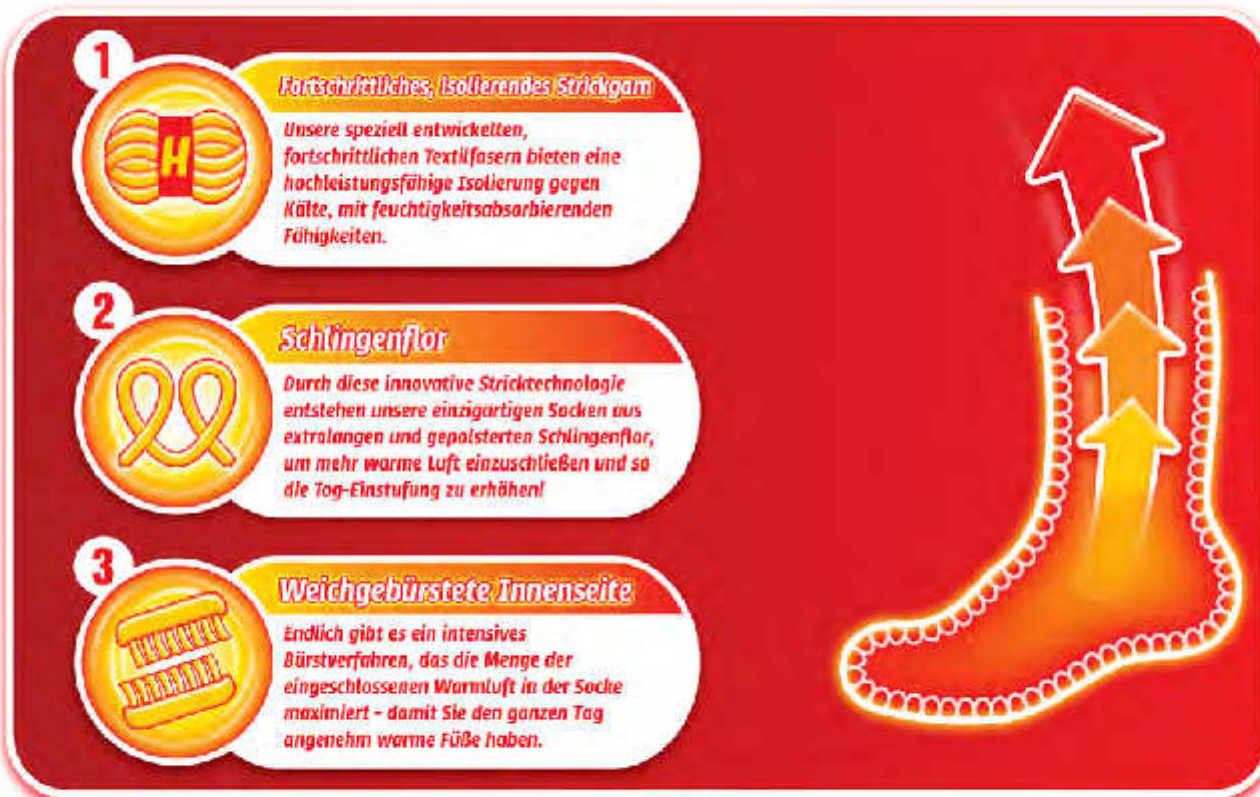


Warum sind die Heat Holders® so warm?

Wie sie funktionieren

- Erst durch den absolut einzigartigen dreistufigen Strickprozess erhalten die Heat Holders ihre überragenden wärmeerhaltenden Eigenschaften.

Heat Holders® unique 3 stage knitting process:



- Das Acrylgarn, das für die Heat Holders genutzt wird, fühlt sich wie Kaschmir an und ist ein sehr begehrtes, jedoch schwierig zu beziehendes Produkt, dessen Produktionskapazitäten weltweit begrenzt sind. Dieses überragende Garn verleiht den Heat Holders das unübertroffen weiche und bequeme Kaschmirgefühl.

- Für den berühmten langgeschlungenen ThermoFlor in unseren Socken wurden viele technologische Innovationen benötigt und unsere Maschinen mussten vollständig umgerüstet werden.

- Unser streng geheimer „einzigartiger Bürstprozess“ maximiert die Menge der Lufttaschen, die die warme Luft in der Socke einschließen.

Die Wärmegarantie der Heat Holders®

Der Wärmegrad

Der Wärmegrad der britischen Industrie ist ein Maß der Wärme und wird allgemein für Bettdecken oder Funktionstextilien genutzt. Während der zweijährigen Entwicklungsphase haben wir den Wärmegrad vieler Garnkombinationen, Strickkonstruktionen und Bürstentechniken immer wieder getestet. Letztendlich haben wir für unsere Produkte dann den höchsten Wärmegrad von 2,34 (gemäß British Standard 4745) erreicht.



Product Description	RRP	Tog Rating
Heat Holders		2.34
High Quality Branded Walking Socks	£16.00	1.57
Branded Ultimate Heavy Walking Socks	£13.99	1.51
Extreme Everest Socks	£11.99	1.47
High Quality Branded Mountaineering Socks	£19.99	1.41
Branded Waterproof Thermal Socks	£25.00	1.39
40 Degrees Below Socks	£7.99	1.30
High Quality Branded 4 Season Socks	£14.00	1.28
High Quality Branded Endurance Socks	£18.99	1.24
Branded Thermolite Technical Socks	£14.95	1.22
Basic Thermal Sock 55g per pair	£5.99	0.89
High Street Retailer **** Thermal Socks	£14.00	0.80
Basic Cotton Sock		0.33

Seitdem hat es keine Socke geschafft, den Wärmegrad der Heat Holders zu erreichen. Wir sind sehr stolz darauf, dass wir diese Wärmegarantie auf jeder Verpackung der Heat Holders angeben können.

“The UltimateTM Thermal Sock”

Other branded & retailer thermalwalking socks purchased across the UK and tested in 2009/2010/2011 to the same standard as Heat Holders according to BS 4745 two plate method for thermal tog rating.

Heat Holders® Produktsortiment

Herren-und Damen **ORIGINAL**



- Fortschrittliches isolierendes Garn
- Langgeschlungener ThermoFlor
- Weichgebürstetes Innenfutter
- Elastischer Sockenrand

Herren-und Damen **GESTREIFT**



- Fortschrittliches isolierendes Garn
- Langgeschlungener ThermoFlor
- Weichgebürstetes Innenfutter
- Elastischer Sockenrand
- Streifen-Design

Herren-und Damen **ABS-SOHL**



- Fortschrittliches isolierendes Garn
- Langgeschlungener ThermoFlor
- Weichgebürstetes Innenfutter
- Elastischer Sockenrand
- Haftsohle
- Ankle Support

Herren-und Damen **EXTRALANG**



- Fortschrittliches isolierendes Garn
- Langgeschlungener ThermoFlor
- Weichgebürstetes Innenfutter
- Elastischer Sockenrand
- Große Länge

Damen **FÜR GUMMISTIEFEL**



- Fortschrittliches isolierendes Garn
- Langgeschlungener ThermoFlor
- Weichgebürstetes Innenfutter
- Modischer Umschlag
- Große Länge

Heat Holders® Produktsortiment

Herren-und Damen **SKISOCKEN**



- Fortschrittliches isolierendes Garn
- Langgeschlungener ThermoFlor
- Weichgebürstetes Innenfutter
- Elastischer Sockenrand
- Extragroße Länge

Herren **UNTERWÄSCHE**



- Gerippt
- Nahtloser Body
- Weichgebürstetes Innenfutter
- Baumwollmischung
- Kurzarm-Weste
- Langarm-Weste
- Long Johns

Damen **STRUMPFHOSEN UND LEGGINGS**



- Fortschrittliches isolierendes Garn
- Weichgebürstetes Innenfutter
- Komfortzwickel

Damen **Mützen und Handschuhe**



- Fortschrittliches isolierendes Garn
- Microluxe Futter
- Weichgebürstetes Innenfutter
- Erweiterbar Cuff

Herren **Mützen und Handschuhe**



- Fortschrittliches isolierendes Garn
- Microluxe Futter
- Weichgebürstetes Innenfutter
- Erweiterbar Cuff

Heat Holders® Verkaufsstelle

• Erzielen Sie Aufmerksamkeit und maximieren Sie die Verkäufe in Ihrem Geschäft mit unserer fantastischen Reihe an POS-Ständern, Wühlkisten und Displaykartons für Heat Holders-Produkte



Heat Holders® 5 Produktständer
BASTA60NA3P13 HÄLL 60 paar
 Höhe: 165cm
 Breite: 71cm
 Tiefe: 31cm



Heat Holders® 5 Produktständer, mit Promi-Botschaftern
BASTA60NA3P13 HÄLL 60 paar
 Höhe: 165cm
 Breite: 71cm
 Tiefe: 31cm



Heat Holders® 3 Produktständer
BASTA36NA3P13 HÄLL 36 paar
 Höhe: 165cm
 Breite: 48cm
 Tiefe: 31cm



Heat Holders® 5 Produktständer Kinder
BASTA48NAKD4P13 HÄLL 48 paar
 Höhe: 165cm
 Breite: 48cm
 Tiefe: 31cm

Heat Holders® Verkaufsstelle



Heat Holders® 5 Produktständer
NASTAGOMAGN SP13 Hält 60 paar
 Höhe: 165cm
 Breite: 71cm
 Tiefe: 31cm



Heat Holders® Kombikiste
RSDSTAND3COMBT Hält 64 paar
 Höhe: 165cm
 Breite: 48cm
 Tiefe: 31cm



Heat Holders® IV-Ständer
DBDHHGONDOLA Hält 240 paar
 Höhe: 165cm
 Breite: 120cm
 Tiefe: 75cm

Heat Holders® Verkaufsstelle



Heat Holders® 4 Ständer mit Seiten
BSDSTANDTOWER Hält 96 paar
Höhe: 170cm
Breite: 68cm
Tiefe: 64cm



Heat Holders® Wühlkiste, mit Craig Phillips und den Botschaftern
BSDBINCP/BSDBIN3A Hält 60 paar
Höhe: 105cm
Breite: 47cm
Tiefe: 31cm



Heat Holders® Wühlkiste
BABIN6ONAGN Hält 60 paar
Höhe: 105cm
Breite: 47cm
Tiefe: 31cm



Heat Holders® 24 Paar Displaykartons
NICHLAGERTEILE SIND NUR ÜBER EINEN
DIREKTEN TRAG ERHALTLICH
Höhe: 50cm Hält 24 paar
Breite: 35cm
Tiefe: 57cm

THE ULTIMATE THERMAL SOCK™

- OVER 7X WARMER THAN A BASIC COTTON SOCK
- OVER 15 MILLION PAIRS SOLD WORLDWIDE



HEAT HOLDERS® are scientifically tested to be the warmest thermal socks available.

Every HEAT HOLDERS® sock is created by our UK PATENTED knitting technology. This unique manufacturing process together with HEAT HOLDERS® innovative Japanese designed thermal yarn ensures maximum warmth is held close to the skin, keeping your feet warmer for longer.



DON'T JUST TAKE OUR WORD OF WARMTH...

TOG (Thermal Overall Grade) is an independent laboratory tested standard. The higher the TOG rating, the better a product is able to keep you warm.

We have never tested another thermal sock with a higher TOG rating than Heat Holders.

THE SCIENCE BEHIND THE SOCKS

- UK PATENT LONG LOOP TECHNOLOGY

UK PATENT NUMBER: GB2482106



Heat Holders Yarn™

Our advanced Japanese designed thermal yarn provides high performance insulation against cold with superior moisture breathing abilities and softness.



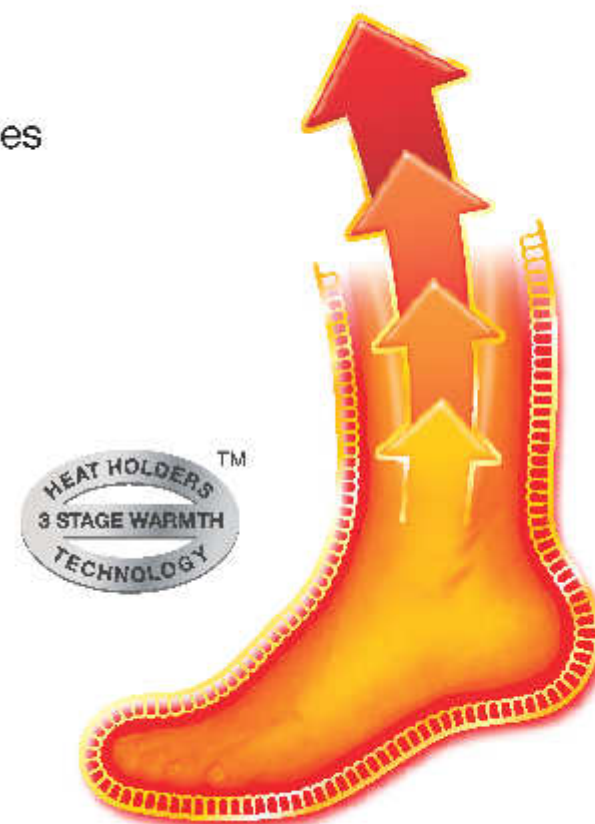
Heat Holders UK PATENTED Loops™

Our innovative knitting technology produces our UK PATENTED long looped cushion pile to hold more warm air, increasing the TOG rating.



Heat Holders Brushing™

Our expert brushing process maximises the amount of warm air held inside each sock for unbeatable warmth and all-day comfort.





LADIES SOCK COLLECTION

ASSORTED RATIO

BLACK x24, INDIGO x10, RASPBERRY x10, PURPLE x10,
DEEP FUCHSIA x8, CHARCOAL x6, RED x4



BLACK



PURPLE



INDIGO



DEEP FUCHSIA



WINE



RASPBERRY



CHARCOAL



PINK



CERISE

ASSORTED ORIGINAL

PRODUCT CODE: BSLHH24G1RTL
BARCODE: 5019041014162

BLACK

PRODUCT CODE: BSLHH24G1BLK14
BARCODE: 5019041014162

PURPLE

PRODUCT CODE: BSLHH24G1PUR14
BARCODE: 5019041075729

INDIGO

PRODUCT CODE: BSLHH24G1IND14
BARCODE: 5019041075675

DEEP FUCHSIA

PRODUCT CODE: BSLHH24G1FUS14
BARCODE: 5019041075705

WINE

PRODUCT CODE: BSLHH24GIWNE14
BARCODE: 5019041075743

RASPBERRY

PRODUCT CODE: BSLHH24GIRAS14
BARCODE: 5019041075699

CERISE

PRODUCT CODE: BSLHH24GICER
BARCODE: 5019041075736

PINK

PRODUCT CODE: BSLHH24GIPNK14
BARCODE: 5019041075668





WINDERMERE



SEASCALE



RYDAL



CALDBECK



GREYSTOKE



APPLEBY



KESWICK



AMBLESIDE



PATTERDALE

WINDERMERE
PRODUCT CODE: BSLHH401G1
BARCODE: 5019041111786

SEASCALE
PRODUCT CODE: BSLHH402G1
BARCODE: 5019041111793

RYDAL
PRODUCT CODE: BSLHH403G1
BARCODE: 5019041111809

GREYSTOKE
PRODUCT CODE: BSLHH406G1
BARCODE: 5019041111830

CALDBECK
PRODUCT CODE: BSLHH405G1
BARCODE: 5019041111823

KESWICK
PRODUCT CODE: BSLHH408G1
BARCODE: 5019041111854

APPLEBY
PRODUCT CODE: BSLHH408G1
BARCODE: 5019041111847

PATTERDALE
PRODUCT CODE: BSLHH410G1
BARCODE: 5019041111878

AMBLESIDE
PRODUCT CODE: BSLHH409G1
BARCODE: 5019041111861





BERRY



GREY



SOFT NAVY

BERRY
PRODUCT CODE: BSLHH411G1
BARCODE: 5019041134433

GREY
PRODUCT CODE: BSLHH412G1
BARCODE: 5019041134440

SOFT NAVY
PRODUCT CODE: BSLHH413G1
BARCODE: 5019041134457





BLACK



PURPLE



DEEP FUCHSIA



INDIGO



ASSORTED WELLINGTON
PRODUCT CODE: BSLHH22G1ASS
BARCODE: 5019041085490

ALSO AVAILABLE IN BLOCK COLOUR



BLACK/CREAM



BERRY/LIGHT PINK



MID BROWN/CREAM



NAVY/WISTERIA

BLACK/CREAM
PRODUCT CODE: BSLHH27B1BLK
BARCODE: 5019041114992

BERRY/LIGHT PINK
PRODUCT CODE: BSLHH27G1PNK
BARCODE: 5019041115005

MID BROWN/CREAM
PRODUCT CODE: BSLHH27G1BRN
BARCODE: 5019041115012

NAVY/WISTERIA
PRODUCT CODE: BSLHH27G1INVY
BARCODE: 5019041115029





LAVENDER



VIOLET



BLACK



CANDY



ROSE



ASSORTED SLIPPER

PRODUCT CODE: BSLHH28G1AST
BARCODE: 5019041019518

LAVENDER

PRODUCT CODE: BSLHH28G1LAV
BARCODE: 5019041076429

VIOLET

PRODUCT CODE: BSLHH28G1VIL
BARCODE: 5019041075767

BLACK

PRODUCT CODE: BSLHH28G1BLK
BARCODE: 5019041099725

CANDY

PRODUCT CODE: BSLHH28G1CAN
BARCODE: 5019041079307

ROSE

PRODUCT CODE: BSLHH28G1ROS
BARCODE: 5019041076412



CANDY

CANDY
PRODUCT CODE: BSLHH20G1PLM
BARCODE: 5019041122751



DEEPEST PLUM

DEEPEST PLUM
PRODUCT CODE: BSLHH20G1LIL
BARCODE: 5019041122768



LILAC MAUVE

LILAC MAUVE
PRODUCT CODE: BSLHH20G1PNK
BARCODE: 5019041122775



MUTED PINK

MUTED PINK
PRODUCT CODE: BSLHH20G1CAN
BARCODE: 5019041122782





DARK LAVENDER



PLUM



CREAM



LILAC MAUVE/CREAM



DEEPEST PLUM/CREAM



MUTED PINK

DARK LAVENDER
PRODUCT CODE: BSLHH25G1LAV
BARCODE: 5019041114862

LILAC MAUVE/CREAM
PRODUCT CODE: BSLHH25G1LCR
BARCODE: 5019041114893

PLUM
PRODUCT CODE: BSLHH25G1PLM
BARCODE: 5019041114879

DEEPEST PLUM
PRODUCT CODE: BSLHH25G1PCR
BARCODE: 5019041114909

CREAM
PRODUCT CODE: BSLHH25G1CRM
BARCODE: 5019041114916

MUTED PINK
PRODUCT CODE: BSLHH25G1PNK
BARCODE: 5019041114923





BLACK



PURPLE



SILVER/CREAM



MID BROWN/CREAM



DENIM/CREAM



BLACK LONG



PURPLE LONG



RASPBERRY LONG

BLACK
PRODUCT CODE: LTLHH551BLK
BARCODE: 5019041109622

DENIM/CREAM
PRODUCT CODE: LTLHH552DCR
BARCODE: 5019041112141

PURPLE
PRODUCT CODE: LTLHH551PUR
BARCODE: 5019041109639

BLACK LONG
PRODUCT CODE: LTLHH553BLK
BARCODE: 5019041138813

SILVER/CREAM
PRODUCT CODE: LTLHH552SCR
BARCODE: 5019041109646

PURPLE LONG
PRODUCT CODE: LTLHH553PUR
BARCODE: 5019041138820

MID BROWN/CREAM
PRODUCT CODE: LTLHH552BCR
BARCODE: 5019041112134

RASPBERRY LONG
PRODUCT CODE: LTLHH553RAS
BARCODE: 5019041138837



FAIRISLE



RASPBERRY/
WHITE

NORDIC



BLACK/
CHARCOAL

NORDIC



MID GREY/LT
GREY

ARGYLE



SOFT NAVY/
CREAM

ARGYLE



RASPBERRY/
WHITE

HEARTS



SOFT NAVY/
CREAM

HEARTS



PURPLE/
BLACK



WINE/
RASPBERRY

STRIPE



PINK/CERISE



DENIM/
NEUTRAL



NAVY/PURPLE



BLACK/
RASPBERRY

SNOWFLAKES



TONAL/DEEP
FUCHSIA



TONAL/NAVY

RASPBERRY/WHITE FAIRISLE
PRODUCT CODE: LTLHH556RAS
BARCODE: 5019041142605

SOFT NAVY/CREAM ARGYLE
PRODUCT CODE: LTLHH554NAVY
BARCODE: 5019041142551

NAVY/PURPLE STRIPE
PRODUCT CODE: LTLHH555NAVY
BARCODE: 5019041142582

BLACK/CHARCOAL FAIRISLE
PRODUCT CODE: LTLHH556CHA
BARCODE: 5019041142612

PURPLE/BLACK HEART
PRODUCT CODE: LTLHH558PUR
BARCODE: 5019041142643

BLACK/RASPBERRY STRIPE
PRODUCT CODE: LTLHH555BLK
BARCODE: 5019041142599

MID GREY/LT GREY NORDIC
PRODUCT CODE: LTLHH557GRY
BARCODE: 5019041142629

WINE/RASPBERRY HEART
PRODUCT CODE: LTLHH558WNE
BARCODE: 5019041142650

TONAL/DEEP FUCHSIA SNOWFLAKES
PRODUCT CODE: LTLHH559FUS
BARCODE: 5019041142667

SOFT NAVY/CREAM NORDIC
PRODUCT CODE: LTLHH557NAVY
BARCODE: 5019041142636

PINK/CERISE STRIPE
PRODUCT CODE: LTLHH555PNK
BARCODE: 5019041142568

TONAL/NAVY SNOWFLAKES
PRODUCT CODE: LTLHH559NAVY
BARCODE: 5019041142674

RASPBERRY/WHITE ARGYLE
PRODUCT CODE: LTLHH554RAS
BARCODE: 5019041142544

DENIM/NEUTRAL STRIPE
PRODUCT CODE: LTLHH555DNM
BARCODE: 5019041142575



FAIRISLE



BLACK/CHAR LT GREY/CERISE

HEARTS



BLACK/CHAR CERISE/RASP

ARGYLE

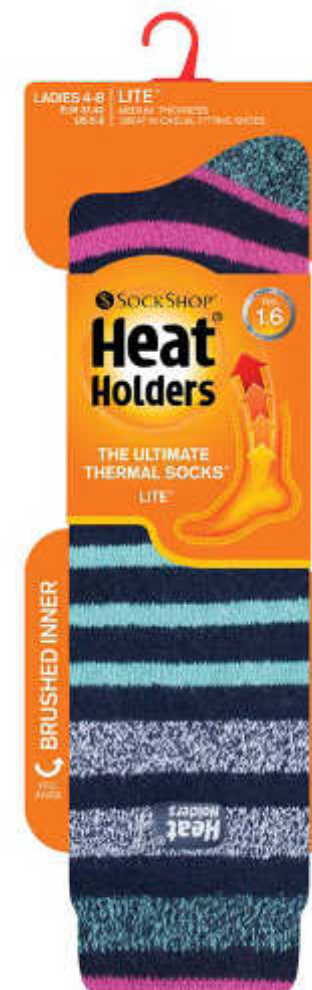


BLACK/CHAR PURPLE/BLACK

STRIPE



LIGHT GREY/
BLACK AQUA/NAVY



BLACK/CHARCOAL FAIRISLE
PRODUCT CODE: LTLHH562CHA
BARCODE: 5019041142735

BLACK/CHARCOAL ARGYLE
PRODUCT CODE: LTLHH560BLK
BARCODE: 5019041142681

LT GREY/CERISE FAIRISLE
PRODUCT CODE: LTLHH562GRY
BARCODE: 5019041142728

PURPLE/BLACK ARGYLE
PRODUCT CODE: LTLHH560PUR
BARCODE: 5019041142698

BLACK/CHARCOAL HEARTS
PRODUCT CODE: LTLHH563CHA
BARCODE: 5019041142759

LT GREY/BLACK STRIPE
PRODUCT CODE: LTLHH561GRY
BARCODE: 5019041142704

CERISE/RASPBERRY HEARTS
PRODUCT CODE: LTLHH563CER
BARCODE: 5019041142742

AQUA/NAVY STRIPE
PRODUCT CODE: LTLHH561NVY
BARCODE: 5019041142711



UK PATENTED LOOPS

(UK PATENT: GB2482106)

BLACK
PRODUCT CODE: 33LH80G1BLK
BARCODE: 5019011115050





LADIES TIGHTS & LEGGINGS



BLACK

BLOCK BLACK XS

PRODUCT CODE: BTLHH84BK1XS
BARCODE: 5019041012229

BLOCK BLACK ASSORTED S,M,L,XL

PRODUCT CODE: BTLHH84BK1AS16
BARCODE: ASSORTED



NAVY

BLOCK BLACK S

PRODUCT CODE: BTLHH84BK1SM16
BARCODE: 5019041132156

NAVY ASSORTED SIZE S,M,L,XL

PRODUCT CODE: BTLHH84NVIAS16
BARCODE: ASSORTED



PURPLE

BLOCK BLACK M

PRODUCT CODE: BTLHH84BK1MD16
BARCODE: 5019041132163

PURPLE ASSORTED SIZE S,M,L,XL

PRODUCT CODE: BTLHH84PU1AT
BARCODE: 5019041051464



BROWN

BLOCK BLACK L

PRODUCT CODE: BTLHH84BK1LG16
BARCODE: 5019041132170

BROWN ASSORTED SIZE S,M,L,XL

PRODUCT CODE: BTLHH84BRIAT
BARCODE: 5019041054052





BLACK

BLOCK BLACK XS

PRODUCT CODE: BTLHH83BK1XS
BARCODE: 5019041022242

BLOCK BLACK ASSORTED S,M,L,XL

PRODUCT CODE: BTLHH83BK1AS16
BARCODE: ASSORTED



NAVY

BLOCK BLACK S

PRODUCT CODE: BTLHH83BK1SM16
BARCODE: 5019041132071

NAVY ASSORTED SIZE S,M,L,XL

PRODUCT CODE: BTLHH83NV1AR
BARCODE: 5019041051471



PURPLE

BLOCK BLACK M

PRODUCT CODE: BTLHH83BK1MD16
BARCODE: 5019041132088

PURPLE ASSORTED SIZE S,M,L,XL

PRODUCT CODE: BTLHH83PU1AR
BARCODE: 5019041051488



BROWN

BLOCK BLACK L

PRODUCT CODE: BTLHH83BK1LG16
BARCODE: 5019041132095

BROWN ASSORTED SIZE S,M,L,XL

PRODUCT CODE: BTLHH83BRIAT
BARCODE: 5019041054069





LADIES ACCESSORIES



BLACK



PURPLE



LIGHT GREY TWIST



FAWN TWIST



ROSE TWIST



NAVY TWIST



CREAM



BLACK HAT
PRODUCT CODE: BSHH940SBLK16
BARCODE: 5019041047047

ROSE HAT
PRODUCT CODE: BSHH7050SROS16
BARCODE: 5019041100490

PURPLE HAT
PRODUCT CODE: BSHH950SPUR16
BARCODE: 5019041047054

NAVY HAT
PRODUCT CODE: BSHH7040SNVY16
BARCODE: 5019041100483

LIGHT GREY HAT
PRODUCT CODE: BSHH7060SGRY16
BARCODE: 5019041100506

CREAM HAT
PRODUCT CODE: BSHH7080SCRM16
BARCODE: 5019041106218

FAWN HAT
PRODUCT CODE: BSHH7070SFWN16
BARCODE: 5019041100513



BLACK



PURPLE



LIGHT GREY



FAWN



ROSE



NAVY



CREAM



BLACK HAT
PRODUCT CODE: BSHH74IOSBLK
BARCODE: 5019041142261

ROSE HAT
PRODUCT CODE: BSHH745OSROS
BARCODE: 5019041142292

PURPLE HAT
PRODUCT CODE: BSHH742OSPUR
BARCODE: 5019041142278

NAVY HAT
PRODUCT CODE: BSHH744OSNVY
BARCODE: 5019041142285

LIGHT GREY HAT
PRODUCT CODE: BSHH746OSGRY
BARCODE: 5019041142308

CREAM HAT
PRODUCT CODE: BSHH748OSCRM
BARCODE: 5019041142322

FAWN HAT
PRODUCT CODE: BSHH747OSFWN
BARCODE: 5019041142315



BLACK



PURPLE



LIGHT GREY



FAWN



ROSE



NAVY



CREAM



BLACK HAT

PRODUCT CODE: BSHH721OSBLK
BARCODE: 5019041142193

PURPLE HAT

PRODUCT CODE: BSHH722OSPUR
BARCODE: 5019041142209

LIGHT GREY HAT

PRODUCT CODE: BSHH726OSGRY
BARCODE: 5019041142230

FAWN HAT

PRODUCT CODE: BSHH727OSFWN
BARCODE: 5019041142247

ROSE HAT

PRODUCT CODE: BSHH725OSROS
BARCODE: 5019041142223

NAVY HAT

PRODUCT CODE: BSHH724OSNVY
BARCODE: 5019041142216

CREAM HAT

PRODUCT CODE: BSHH728OSCRM
BARCODE: 5019041142254



BLACK



PURPLE



LIGHT GREY TWIST



FAWN TWIST



ROSE TWIST



NAVY TWIST



CREAM

BLACK S/M

PRODUCT CODE: BSGHH94SMBLK16
BARCODE: 5019041046989

LIGHT GREY S/M

PRODUCT CODE: BSGH706SMGRY16
BARCODE: 5019041100414

ROSE M/L

PRODUCT CODE: BSGH705MLROS16
BARCODE: 5019041100407

BLACK M/L

PRODUCT CODE: BSGHH94MLBLK16
BARCODE: 5019041046996

LIGHT GREY M/L

PRODUCT CODE: BSGH706MLGRY16
BARCODE: 5019041100421

NAVY S/M

PRODUCT CODE: BSGH704SMNVY16
BARCODE: 5019041100377

PURPLE S/M

PRODUCT CODE: BSGHH95SMPUR16
BARCODE: 5019041047009

FAWN S/M

PRODUCT CODE: BSGH707SMFWN16
BARCODE: 5019041100438

NAVY M/L

PRODUCT CODE: BSGH704MLNVY16
BARCODE: 5019041100384

PURPLE M/L

PRODUCT CODE: BSGHH95MLPUR16
BARCODE: 5019041047016

FAWN M/L

PRODUCT CODE: BSGH707MLFWN16
BARCODE: 5019041100445

CREAM S/M

PRODUCT CODE: BSGH708SMCRM16
BARCODE: 5019041106195

ROSE S/M

PRODUCT CODE: BSGH705SMROS16
BARCODE: 5019041100391

CREAM M/L

PRODUCT CODE: BSGH708MLCRM16
BARCODE: 5019041106201





BLACK



PURPLE



LIGHT GREY TWIST



FAWN TWIST



ROSE TWIST



NAVY TWIST



CREAM

BLACK NECK WARMER
PRODUCT CODE: BSJH701OSBLK16
BARCODE: 5019041083090

ROSE NECK WARMER
PRODUCT CODE: BSJH705OSROS16
BARCODE: 5019041100568

PURPLE NECK WARMER
PRODUCT CODE: BSJH702OSPUR16
BARCODE: 5019041083106

NAVY NECK WARMER
PRODUCT CODE: BSJH704OSNVY
BARCODE: 5019041100551

LIGHT GREY NECK WARMER
PRODUCT CODE: BSJH706OSGRY16
BARCODE: 5019041100575

CREAM NECK WARMER
PRODUCT CODE: BSJH708OSCRM
BARCODE: 5019041106225

FAWN NECK WARMER
PRODUCT CODE: BSJH707OSFWN16
BARCODE: 5019041100582





BLACK



PURPLE



LIGHT GREY TWIST



FAWN TWIST



ROSE TWIST



NAVY TWIST



BLACK CONVERTER

PRODUCT CODE: BSGHH992BLK16
BARCODE: 5019041080433

ROSE CONVERTER

PRODUCT CODE: BSGHH992ROS16
BARCODE: 5019041100780

PURPLE CONVERTER

PRODUCT CODE: BSGHH992PUR16
BARCODE: 5019041083229

NAVY CONVERTER

PRODUCT CODE: BSGHH992NVY16
BARCODE: 5019041100773

LIGHT GREY CONVERTER

PRODUCT CODE: BSGHH992GRY16
BARCODE: 5019041100797

CREAM NECK WARMER

PRODUCT CODE: BSJH7080SCRM
BARCODE: 5019041106225

FAWN CONVERTER

PRODUCT CODE: BSGHH992FWN16
BARCODE: 5019041100803



MENS SOCK COLLECTION

ASSORTED RATIO

BLACK x30, NAVY x12, CHARCOAL x6, DENIM x6, FOREST GREEN x5,
BURGUNDY x5, EARTH BROWN x4, RED x4



BLACK



NAVY



CHARCOAL



DENIM



EARTH BROWN



FOREST GREEN



RED



BURGUNDY



STONEWASH



ASSORTED
PRODUCT CODE: BSMHH04HIRT16
BARCODE: 5019041013141

EARTH BROWN
PRODUCT CODE: BSMHH04HIBRN14
BARCODE: 5019041075590

BLACK
PRODUCT CODE: BSMHH04H1BLK16
BARCODE: 5019041013141

FOREST GREEN
PRODUCT CODE: BSMHH04H1GRE15
BARCODE: 5019041075606

NAVY
PRODUCT CODE: BSMHH04HINVY15
BARCODE: 5019041075576

RED
PRODUCT CODE: BSMHH04HIRED14
BARCODE: 5019041075637

CHARCOAL
PRODUCT CODE: BSMHH04HICHA15
BARCODE: 5019041075583

BURGUNDY
PRODUCT CODE: BSMHH04HIBUR141
BARCODE: 5019041075644

DENIM
PRODUCT CODE: BSMHH04HIDNM15
BARCODE: 5019041075613

STONEWASH
PRODUCT CODE: BSMHH04HISTN14
BARCODE: 5019041075620



PENRITH



DALSTON



ROCKCLIFFE



CARTMEL



LOWESWATER



LOWTHER



LORTON



ALSTON



BEWCASTLE

PENRITH
PRODUCT CODE: BSMHH301H1
BARCODE: 5019041111687

LOWTHER
PRODUCT CODE: BSMHH306H1
BARCODE: 5019041111731

DALSTON
PRODUCT CODE: BSMHH302H1
BARCODE: 5019041111694

LORTON
PRODUCT CODE: BSMHH307H1
BARCODE: 5019041111748

ROCKSLIFFE
PRODUCT CODE: BSMHH303H1
BARCODE: 5019041111700

ALSTON
PRODUCT CODE: BSMHH309H1
BARCODE: 5019041111762

CARTMEL
PRODUCT CODE: BSMHH304H1
BARCODE: 5019041111717

BEWCASTLE
PRODUCT CODE: BSMHH310H1
BARCODE: 5019041111779

LOWESWATER
PRODUCT CODE: BSMHH305H1
BARCODE: 55019041111724





BLACK



CHARCOAL



NAVY

BLACK
PRODUCT CODE: BSMHH311H1
BARCODE: 5019041134303

CHARCOAL
PRODUCT CODE: BSMHH312H1
BARCODE: 5019041134310

NAVY
PRODUCT CODE: BSMHH313H1
BARCODE: 5019041134327





BLACK/GREY WITH RED



BLACK/GREY WITH GREEN



BLACK/GREY WITH DENIM

BLACK/GREY WITH RED
PRODUCT CODE: BSMHH314H1
BARCODE: 5019041141523

BLACK/GREY WITH GREEN
PRODUCT CODE: BSMHH315H1
BARCODE: 5019041141530

BLACK/GREY WITH DENIM
PRODUCT CODE: BSMHH316H1
BARCODE: 5019041141547





BLACK



NAVY



FOREST GREEN

BLACK
PRODUCT CODE: BSMHH07HIBLK
BARCODE: 5019041114978

NAVY
PRODUCT CODE: BSMHH07HINVY
BARCODE: 5019041114985

FOREST GREEN
PRODUCT CODE: BSMHH07HIGRE
BARCODE: 5019041114961





BLACK WITH GREY
GRIP



BLACK WITH RED
GRIP



DEEP BLUE



RICH RED



ASSORTED SLIPPER

PRODUCT CODE: BSMHH08HIAST16

BARCODE: 5019041019501



BLACK

BLACK
PRODUCT CODE: BSMHH02H1BLK
BARCODE: 5019041142414



BLACK/CHARCOAL
TWIST

BLACK/CHARCOAL
PRODUCT CODE: BSMHH02H1BGR
BARCODE: 5019041142421



NAVY/DENIM
TWIST

NAVY/DENIM
PRODUCT CODE: BSMHH02H1IDE
BARCODE: 5019041142438





UK PATENTED LOOPS

(UK PATENT: GB2482106)



BLACK 6-11
PRODUCT CODE: 53MHHSIH-BLK
BARCODE: 5019011114329

BLACK 12-14
PRODUCT CODE: BSM-HH82J13-K
BARCODE: 5018011114336



BLACK

NAVY

CHARCOAL/GREY

DENIM/NAVY



BLACK LONG

NAVY LONG

FOREST GREEN LONG

BLACK
PRODUCT CODE: LTMHH501BLK
BARCODE: 5019041109592

BLACK LONG
PRODUCT CODE: LTMHH503BLK
BARCODE: 5019041138783

NAVY
PRODUCT CODE: LTMHH501NVY
BARCODE: 5019041109608

NAVY LONG
PRODUCT CODE: LTMHH503NVY
BARCODE: 5019041138790

CHARCOAL/GREY
PRODUCT CODE: LTMHH502CHG
BARCODE: 5019041109615

FOREST GREEN LONG
PRODUCT CODE: LTMHH503GRE
BARCODE: 5019041138806

DENIM/NAVY
PRODUCT CODE: LTMHH502DNV
BARCODE: 5019041112127



ARGYLE



BLACK/RED



NAVY/DENIM



CHARCOAL/
MID GREY

BLOCK STRIPE



BLACK/RED



NAVY/DENIM



BLACK/CHARCOAL

FAIRISLE



NAVY/DENIM



MID GREY/
LIGHT GREY



BLACK/CHARCOAL

BLACK/RED ARGYLE
PRODUCT CODE: LTMHH504BLK
BARCODE: 5019041142452

NAVY/DENIM ARGYLE
PRODUCT CODE: LTMHH504NVY
BARCODE: 5019041142469

CHARCOAL/MID GREY ARGYLE
PRODUCT CODE: LTMHH504CHA
BARCODE: 5019041142476

BLACK/RED BLOCK STRIPE
PRODUCT CODE: LTMHH505BLK
BARCODE: 5019041142483

NAVY/DENIM BLOCK STRIPE
PRODUCT CODE: LTMHH505NVY
BARCODE: 5019041142490

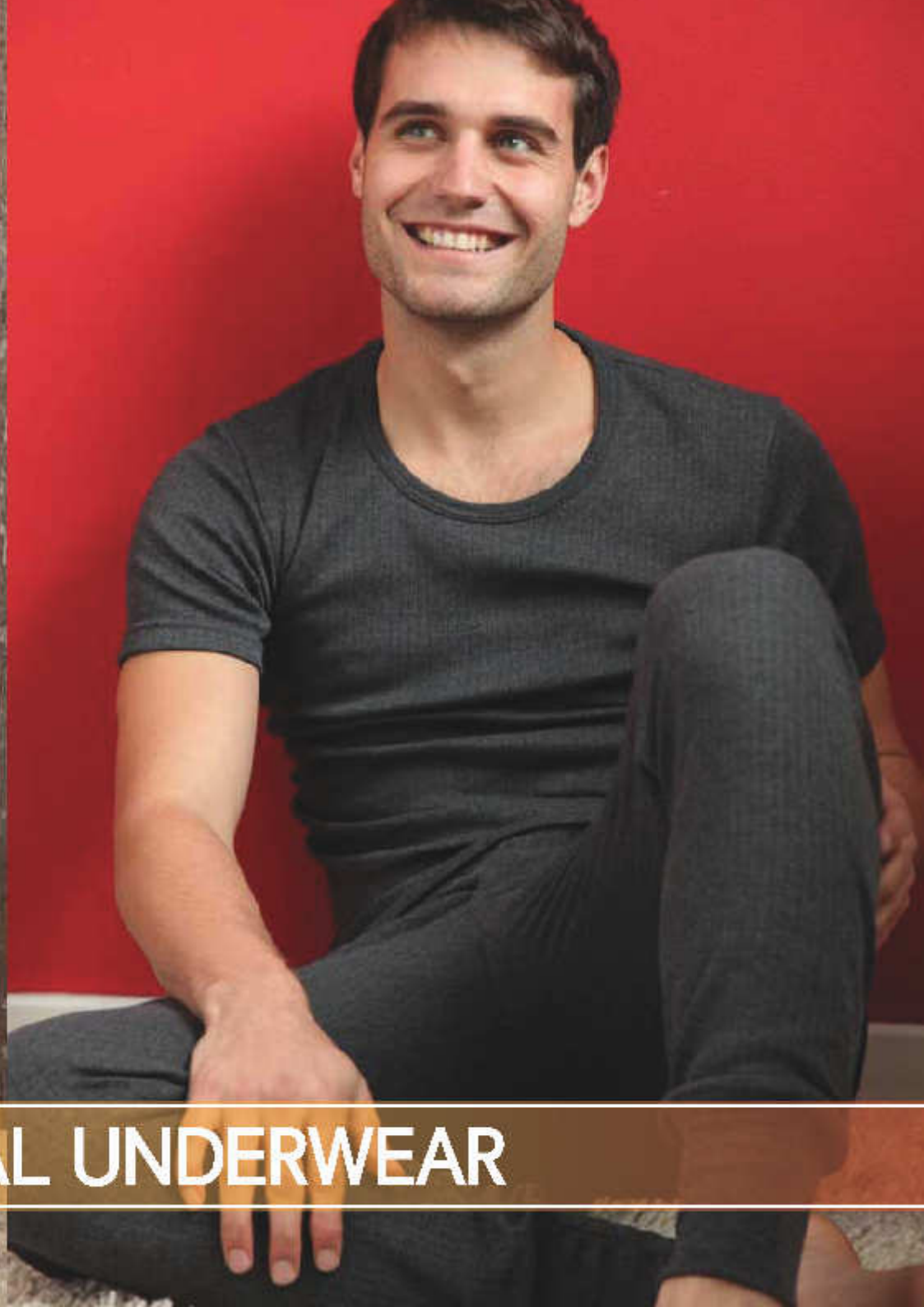
BLACK/CHARCOAL BLOCK STRIPE
PRODUCT CODE: LTMHH505CHA
BARCODE: 5019041142506

NAVY/DENIM FAIRISLE
PRODUCT CODE: LTMHH506NVY
BARCODE: 5019041142513

MID GREY/LIGHT GREY FAIRISLE
PRODUCT CODE: LTMHH506GRY
BARCODE: 5019041142520

BLACK/CHARCOAL FAIRISLE
PRODUCT CODE: LTMHH506BLK
BARCODE: 5019041142537





MENS THERMAL UNDERWEAR



WHITE



CHARCOAL



WHITE LONG JOHN S
PRODUCT CODE: 3TLHH9WTSML
BARCODE: 501904033538

CHARCOAL LONG JOHN S
PRODUCT CODE: 3TLHH9WTSML
BARCODE: 501904033545

WHITE LONG JOHN M
PRODUCT CODE: 3TLHH9WTMED
BARCODE: 501904102119

CHARCOAL LONG JOHN M
PRODUCT CODE: 3TLHH9WTMED
BARCODE: 501904102126

WHITE LONG JOHN L
PRODUCT CODE: 3TLHH9WTLGE
BARCODE: 501904021207

CHARCOAL LONG JOHN L
PRODUCT CODE: 3TLHH9WTLGE
BARCODE: 501904021214

WHITE LONG JOHN XL
PRODUCT CODE: 3TLHH9WTXLG
BARCODE: 501904102121

CHARCOAL LONG JOHN XL
PRODUCT CODE: 3TLHH9WTXLG
BARCODE: 501904102128

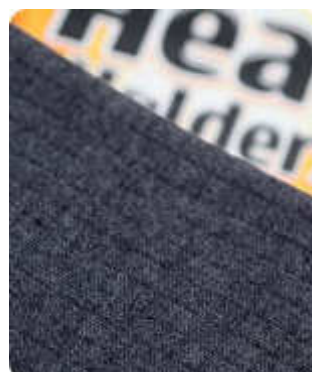
WHITE LONG JOHN XXL
PRODUCT CODE: 3TLHH9WTXXL
BARCODE: 501904021222

CHARCOAL LONG JOHN XXL
PRODUCT CODE: 3TLHH9WTXXL
BARCODE: 501904021229

WHITE



CHARCOAL



WHITE SHORT SLEEVE S
PRODUCT CODE: BTVHH92WTSML
BARCODE: 5019041033552

CHARCOAL SHORT SLEEVE S
PRODUCT CODE: BTVHH92CHSML
BARCODE: 5019041033569

WHITE SHORT SLEEVE M
PRODUCT CODE: BTVHH93WTMED
BARCODE: 5019041021276

CHARCOAL SHORT SLEEVE M
PRODUCT CODE: BTVHH92CHMED
BARCODE: 5019041021313

WHITE SHORT SLEEVE L
PRODUCT CODE: BTVHH92WTLGE
BARCODE: 5019041021283

CHARCOAL SHORT SLEEVE L
PRODUCT CODE: BTVHH92CHLGE
BARCODE: 5019041021320

WHITE SHORT SLEEVE XL
PRODUCT CODE: BTVHH92WTLG
BARCODE: 5019041021290

CHARCOAL SHORT SLEEVE XL
PRODUCT CODE: BTVHH92CHXLG
BARCODE: 5019041021337

WHITE SHORT SLEEVE XXL
PRODUCT CODE: BTVHH92WTXXL
BARCODE: 5019041021306

CHARCOAL SHORT SLEEVE XXL
PRODUCT CODE: BTVHH92CHXXL
BARCODE: 5019041021344

WHITE



CHARCOAL



WHITE LONG SLEEVE S
PRODUCT CODE: BTVHH93WTSML
BARCODE: 5019041033576

WHITE LONG SLEEVE M
PRODUCT CODE: BTVHH93WHMED
BARCODE: 5019041021351

WHITE LONG SLEEVE L
PRODUCT CODE: BTVHH93WTLGE
BARCODE: 5019041021368

WHITE LONG SLEEVE XL
PRODUCT CODE: BTVHH93WTXLG
BARCODE: 5019041021375

WHITE LONG SLEEVE XXL
PRODUCT CODE: BTVHH93WTXXL
BARCODE: 5019041021382

CHARCOAL LONG SLEEVE S
PRODUCT CODE: BTVHH93CHSML
BARCODE: 5019041033583

CHARCOAL LONG SLEEVE M
PRODUCT CODE: BTVHH93CHMED
BARCODE: 5019041021399

CHARCOAL LONG SLEEVE L
PRODUCT CODE: BTVHH93CHLGE
BARCODE: 5019041021405

CHARCOAL LONG SLEEVE XL
PRODUCT CODE: BTVHH93CHXLG
BARCODE: 5019041021412

CHARCOAL LONG SLEEVE XXL
PRODUCT CODE: BTVHH93CHXXL
BARCODE: 5019041021429



MENS ACCESSORIES



BLACK



CHARCOAL



NAVY TWIST



BROWN TWIST



BURGUNDY TWIST



KHAKI TWIST



BLACK HAT
PRODUCT CODE: BSHH910SBLK16
BARCODE: 5019041047023

BROWN HAT
PRODUCT CODE: BSHH605OSBRN16
BARCODE: 5019041100469

CHARCOAL HAT
PRODUCT CODE: BSHH920SCHAI6
BARCODE: 5019041047030

BURGUNDY HAT
PRODUCT CODE: BSHH606OSBUR
BARCODE: 5019041100476

BLACK/CHARCOAL MIX
PRODUCT CODE: BSHH930SAST
BARCODE: ASSORTED

KHAKI HAT
PRODUCT CODE: BSHH607OSKKI
BARCODE: 5019041100834

NAVY HAT
PRODUCT CODE: BSHH604OSNVY16
BARCODE: 5019041100452



BLACK



CHARCOAL



KHAKI TWIST



BLACK S/M

PRODUCT CODE: BSGHH91SMBLK16
BARCODE: 5019041046927

KHAKI S/M

PRODUCT CODE: BSGH607SMKKI
BARCODE: 5019041100810

BLACK L/XL

PRODUCT CODE: BSGHH91LXBLK16
BARCODE: 5019041046941

KHAKI L/XL

PRODUCT CODE: BSGH607LXKKI
BARCODE: 5019041100827

CHARCOAL S/M

PRODUCT CODE: BSGHH92SMCHA16
BARCODE: 5019041046958

CHARCOAL L/XL

PRODUCT CODE: BSGHH92LXCHA16
BARCODE: 5019041046972



BLACK



CHARCOAL



KHAKI TWIST

BLACK NECK WARMER
PRODUCT CODE: BSJH6010SBLK16
BARCODE: 5019041082970

CHARCOAL NECK WARMER
PRODUCT CODE: BSJH6020SCHA16
BARCODE: 5019041083175

KHAKI NECK WARMER
PRODUCT CODE: BSJH6070SKKI
BARCODE: 5019041100865





BLACK

BLACK HAT
PRODUCT CODE: BSHH801OSBLK
BARCODE: 5019041100599



CHARCOAL

CHARCOAL HAT
PRODUCT CODE: BSHH802OSCHA
BARCODE: 5019041100841



NAVY TWIST

NAVY HAT
PRODUCT CODE: BSHH803OSNVY
BARCODE: 5019041100858





BLACK



CHARCOAL





MOON ROCK



ANTIQUE SILVER



BLACK



WINTER FAWN



HOT CHOCOLATE



MULLED WINE



SNOW FALL



MOON ROCK
PRODUCT CODE: ABUH10VOR
BARCODE: 501904106711

HOT CHOCOLATE
PRODUCT CODE: ABUH10HCH
BARCODE: 501904106988

ANTIQUE SILVER
PRODUCT CODE: ABUH10ICAN
BARCODE: 5019041087158

MULLED WINE
PRODUCT CODE: ABUH10MWN
BARCODE: 5019041089895

BLACK
PRODUCT CODE: ABUH10BLK
BARCODE: 5019041098861

SNOW FALL
PRODUCT CODE: ABUH10SNF
BARCODE: 50190410988701

WINTER FAWN
PRODUCT CODE: ABUH10WNF
BARCODE: 5019041098871



KINDER KOLLEKTION



DEEP BLUE



RED



BLACK



ROYAL BLUE



HOT PINK



PURPLE



INDIGO



RASPBERRY

9-1½ ASSORTED
PRODUCT CODE: 53KH-34/IAS
BARCODE: 5019011016701

2-5½ ASSORTED
PRODUCT CODE: 53KH-35/IAS
BARCODE: 5019011016807





NAVY STRIPE HAT
WITH MATCHING MITTENS

NAVY STRIPE SET
PRODUCT CODE: BSKHG10INVY36
BARCODE: 5019041142766



CREAM/RED CHEVRON HAT
WITH MATCHING MITTENS

CREAM/RED CHEVRON SET
PRODUCT CODE: BSKHG102CRM36
BARCODE: 5019041142773



NAVY STRIPE HAT WITH
MATCHING MITTENS

NAVY STRIPE SET
PRODUCT CODE: BSKHG103NVY36
BARCODE: 5019041142780



CREAM NORDIC HAT WITH
MATCHING MITTENS

CREAM NORDIC SET
PRODUCT CODE: BSKHG104CRM36
BARCODE: 5019041142797



NAVY HAT WITH MATCHING
NAVY MITTENS

NAVY SET
PRODUCT CODE: BSKHG105NVY36
BARCODE: 5019041143183



BLACK HAT WITH MATCHING
BLACK MITTENS

BLACK SET
PRODUCT CODE: BSKHG106BLK36
BARCODE: 5019041143190



CHARCOAL/ORANGE HAT
WITH MATCHING GLOVES

CHARCOAL/ORANGE SET
PRODUCT CODE: BSKHG201CHA710
BARCODE: 5019041142803



DENIM/NAVY HAT
WITH MATCHING GLOVES

ELECTRIC BLUE/NAVY SET
PRODUCT CODE: BSKHG202BLU710
BARCODE: 5019041142810



CHARCOAL/GREEN HAT
WITH MATCHING GLOVES

CHARCOAL/GREEN SET
PRODUCT CODE: BSKHG203CHA710
BARCODE: 5019041142827



DENIM/NAVY HAT
WITH MATCHING GLOVES

ELECTRIC BLUE/NAVY SET
PRODUCT CODE: BSKHG204BLU710
BARCODE: 5019041142834



NAVY HAT WITH MATCHING
NAVY GLOVES

NAVY SET 7-10
PRODUCT CODE: BSKHG205NVY710
BARCODE: 5019041143206

BLACK SET 7-10
PRODUCT CODE: BSKHG206BLK710
BARCODE: 5019041143213



BLACK HAT WITH MATCHING
BLACK GLOVES

NAVY SET 11+
PRODUCT CODE: BSKHG301NVY11
BARCODE: 5019041143220

BLACK SET 11+
PRODUCT CODE: BSKHG302BLK11
BARCODE: 5019041143237



LAVENDER STRIPE HAT
WITH MATCHING MITTENS

LAVENDER STRIPE SET
PRODUCT CODE: BSKHG401LAV36
BARCODE: 5019041142841



PINK HAT
WITH MATCHING MITTENS

PINK SET
PRODUCT CODE: BSKHG402PNK36
BARCODE: 5019041142858



PINK HEART HAT WITH
MATCHING MITTENS

PINK HEART SET
PRODUCT CODE: BSKHG404PNK36
BARCODE: 5019041142872



CREAM STRIPE HAT WITH
MATCHING MITTENS

CREAM STRIPE SET
PRODUCT CODE: BSKHG403CRM36
BARCODE: 5019041142865



PURPLE/PINK HAT
WITH MATCHING MITTENS

PURPLE/PINK SET
PRODUCT CODE: BSKHG406PUR36
BARCODE: 5019041143251



CREAM HAT
WITH MATCHING MITTENS

CREAM SET
PRODUCT CODE: BSKHG405CRM36
BARCODE: 5019041143244



PINK/PURPLE HAT WITH MATCHING
PINK/PURPLE GLOVES

PINK/PURPLE SET 7-10
PRODUCT CODE: BSKHG502PNK710
BARCODE: 5019041142896

PINK/PURPLE SET 11+
PRODUCT CODE: BSKHG602PNK11
BARCODE: 5019041142919



NAVY/PURPLE HAT WITH MATCHING
NAVY/PURPLE GLOVES

NAVY/PURPLE SET 7-10
PRODUCT CODE: BSKHG501INVY710
BARCODE: 5019041142889

NAVY/PURPLE SET 11+
PRODUCT CODE: BSKHG601INVY11
BARCODE: 5019041142902



BLACK HAT
WITH MATCHING GLOVES

BLACK SET 7-10
PRODUCT CODE: BSKHG503BLK710
BARCODE: 5019041143268

BLACK SET 11+
PRODUCT CODE: BSKHG603BLK11
BARCODE: 5019041143299



CORAL HAT
WITH MATCHING GLOVES

CORAL SET 7-10
PRODUCT CODE: BSKHG505CRL710
BARCODE: 5019041143282

CORAL SET 11+
PRODUCT CODE: BSKHG605CRL11
BARCODE: 5019041143312



CREAM/OAT HAT
WITH MATCHING GLOVES

CREAM/OAT SET 7-10
PRODUCT CODE: BSKHG504CRM710
BARCODE: 5019041143275

CREAM/OAT SET 11+
PRODUCT CODE: BSKHG604CRM11
BARCODE: 5019041143305

SOCKSHOP™

Heat[®] Holders

Licensed Socks





9-12

PRODUCT CODE: BSKHL551D1
BARCODE: 5019041117306

12½-3½

PRODUCT CODE: BSKHL651E1
BARCODE: 5019041117375





9-12

PRODUCT CODE: BSKHL553D1
BARCODE: 5019041117320



12½-3½

PRODUCT CODE: BSKHL653E1
BARCODE: 5019041117399





9-12

PRODUCT CODE: BSKHL552D1
BARCODE: 5019041117313



12½-3½

PRODUCT CODE: BSKHL652E1
BARCODE: 5019041117382





9-12

PRODUCT CODE: BSKHL502D1
BARCODE: 5019041117276



12½-3½

PRODUCT CODE: BSKHL602E1
BARCODE: 5019041117344





9-12

PRODUCT CODE: BSKHL503D1
BARCODE: 5019041117283



12½-3½

PRODUCT CODE: BSKHL603E1
BARCODE: 5019041117351





9-12

PRODUCT CODE: BSKHL501D1
BARCODE: 5019041117269

12½-3½

PRODUCT CODE: BSKHL601E1
BARCODE: 5019041117337





9-12

PRODUCT CODE: BSKHL504D1
BARCODE: 5019041117290

12½-3½

PRODUCT CODE: BSKHL604E1
BARCODE: 5019041117368





4-8

PRODUCT CODE: BSLHL202G1

BARCODE: 5019041117252



4-8

PRODUCT CODE: BSLHL201G1

BARCODE: 5019041117245



6-11
PRODUCT CODE: BSMHL103H1
BARCODE: 5019041117221





6-11

PRODUCT CODE: BSMHL101H1

BARCODE: 5019041117207



6-11

PRODUCT CODE: BSMHL104H1

BARCODE: 5019041117238





6-11
PRODUCT CODE: BSMHL702H1
BARCODE: 5019041117412

Making life warmer™





NEW MEDIA ENTERTAINMENT AG

DISTRIBUTION OF MULTIMEDIA, SOFTWARES, DESIGNPROJEKTE
HOUSEHOLD APPLIANCES - DVD/BLURAY - MUSIC - GAMES

Härdlistr. 17
8967 Spreitenbach
Switzerland

Tel. +41-56-4187080
Fax +41-56-4187081
www.nme.ch

**NO
MORE
COLD
FEET!**



The Ultimate Thermal Sock



www.heatholders.com

Heat Holders & the Heat Holders logo are registered trademarks of Drew Brady & Co. Ltd